

# Bearbeitung / Machining Cabineo

Variante / Option 1:  
Bohrer  $\varnothing$  15 mm  
Drill  $\varnothing$  15 mm

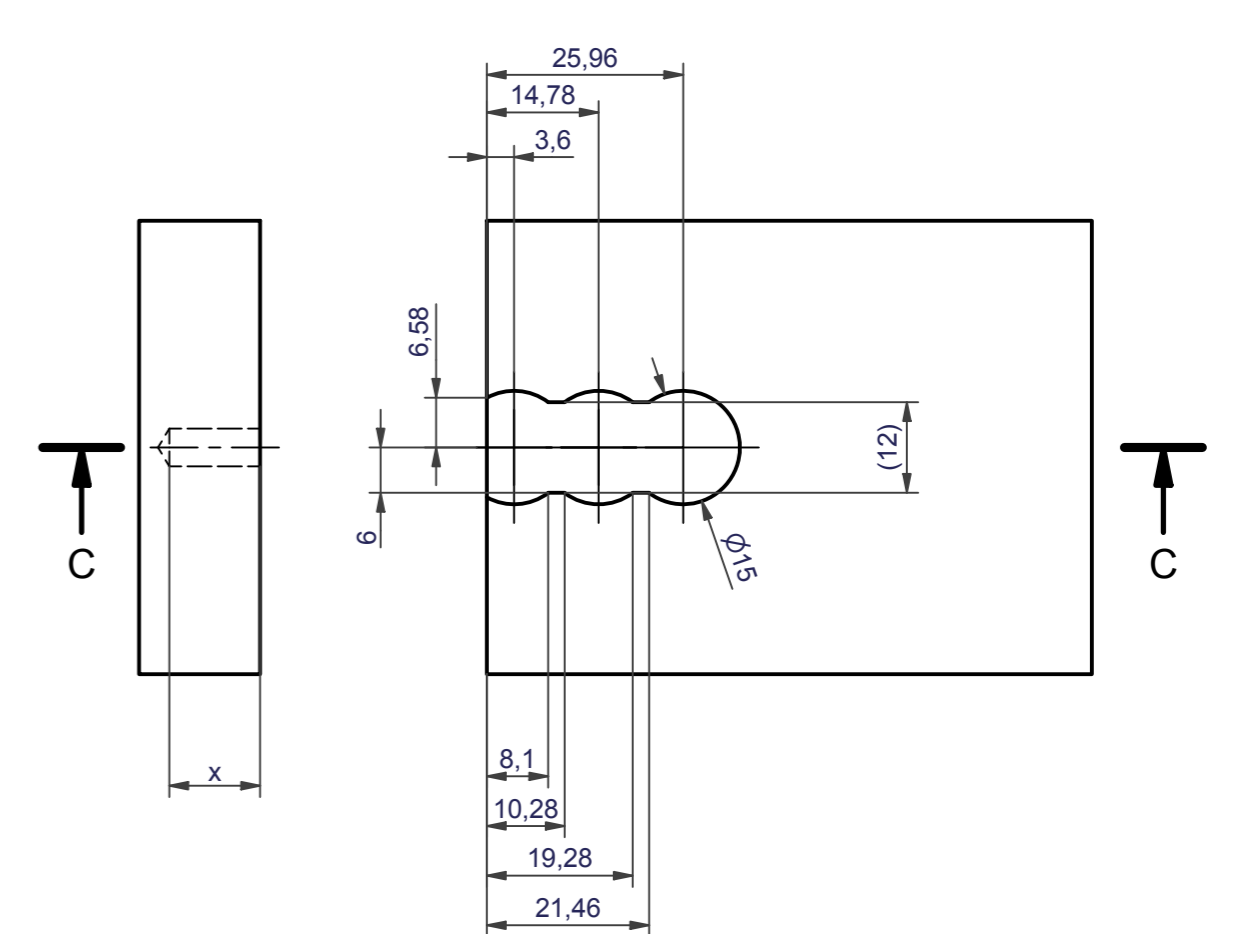
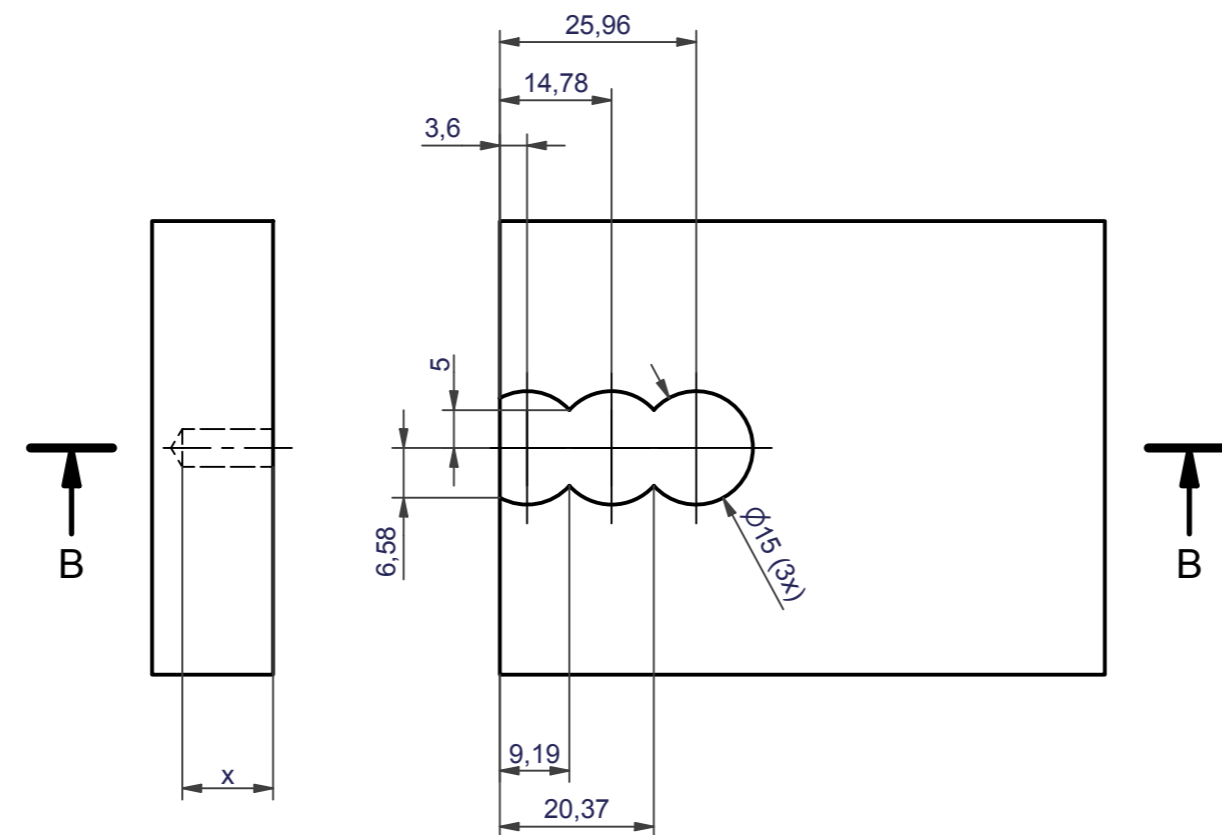
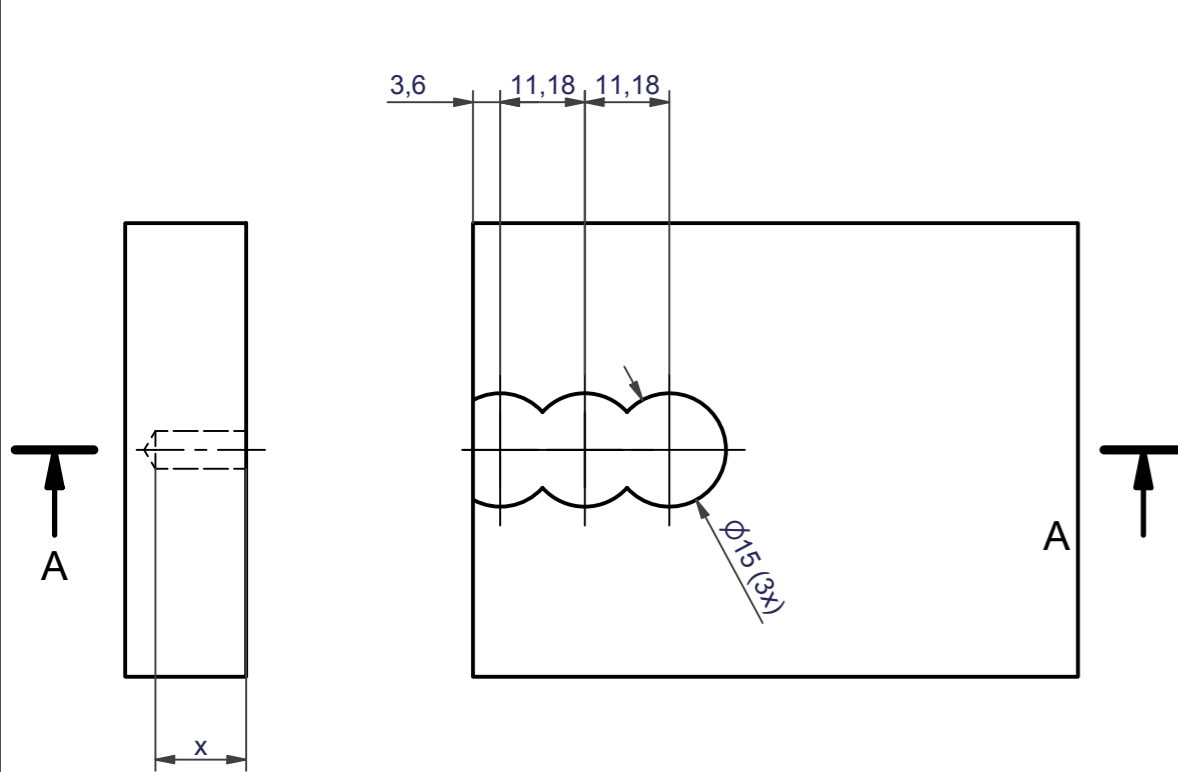
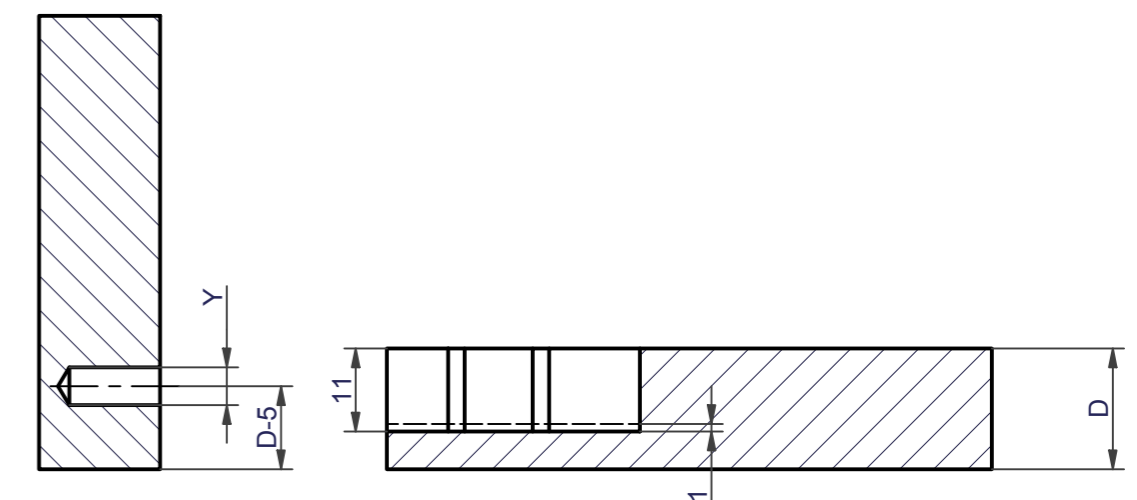
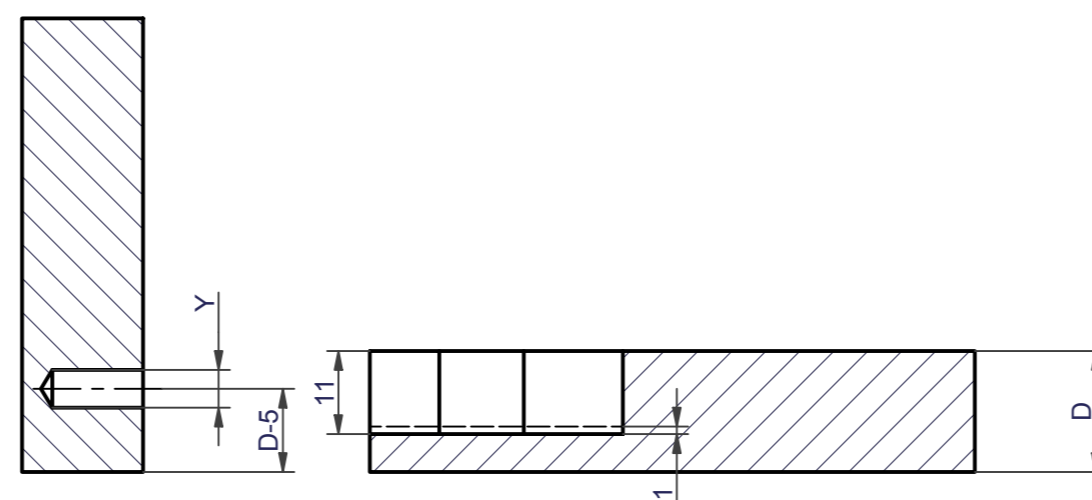
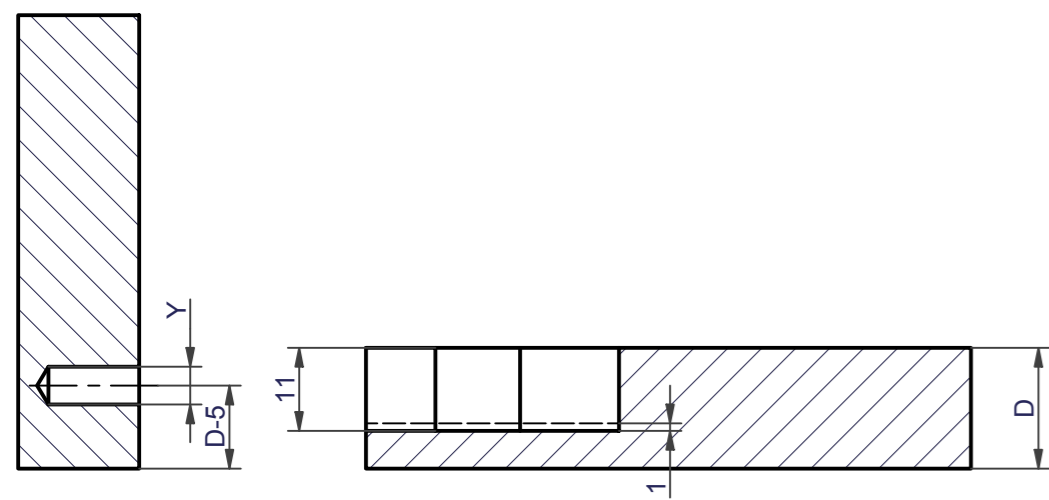
Variante / Option 2:  
Fräser  $\varnothing$  10 mm oder kleiner  
Cutter  $\varnothing$  10 mm or smaller

Variante / Option 3:  
Fräser  $\varnothing$  12 mm  
Cutter  $\varnothing$  12 mm

A-A (1:1)

B-B (1:1)

C-C (1:1)



	X [mm]	Y= $\varnothing$ [mm]
Cabineo 8	8	5
Cabineo 12	12	5
Cabineo 8 M6	8	5
Muffe M6x12.3	13.5	8
Muffe M6x15.3	16.5	8